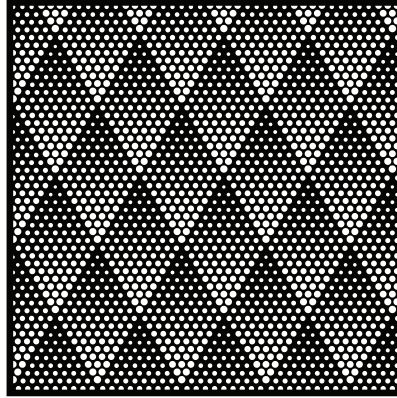
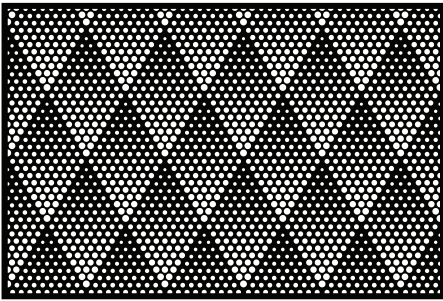


# Pattern #M024

---

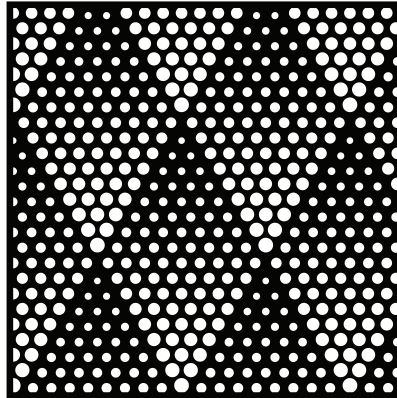
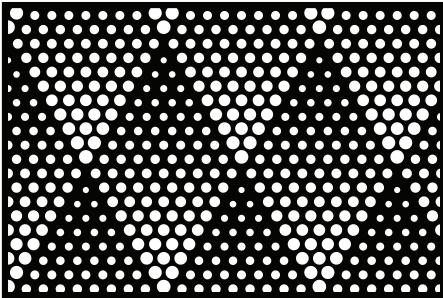
All patterns are displayed at 4 × 6" and 5 × 5" scales, with a 1" inset from the edge of the plate to ensure consistent and accurate reference.

## COMPACT



**Openness<sup>①</sup>: 29.54%**  
**Type: Seamless<sup>②</sup>**  
**Inset: Standard<sup>③</sup>**  
**Category: Modern**

## EXPANDED



**Openness<sup>①</sup>: 30.12%**  
**Type: Seamless<sup>②</sup>**  
**Inset: Standard<sup>③</sup>**  
**Category: Modern**

Note:

- ① - openness quantifies the ratio of pattern cutouts to the overall surface
- ② - pattern that is continuous and repeatable, without visible edges or interruptions
- ③ - all Artico Metals panels feature a standard 1" inset from the edge to the start of the pattern

**© Artico Metals LLC**

This document, encompassing all concepts, layouts, and plans, is the property of Artico Metals. Any duplication or use without prior written consent from Artico Metals is strictly prohibited.